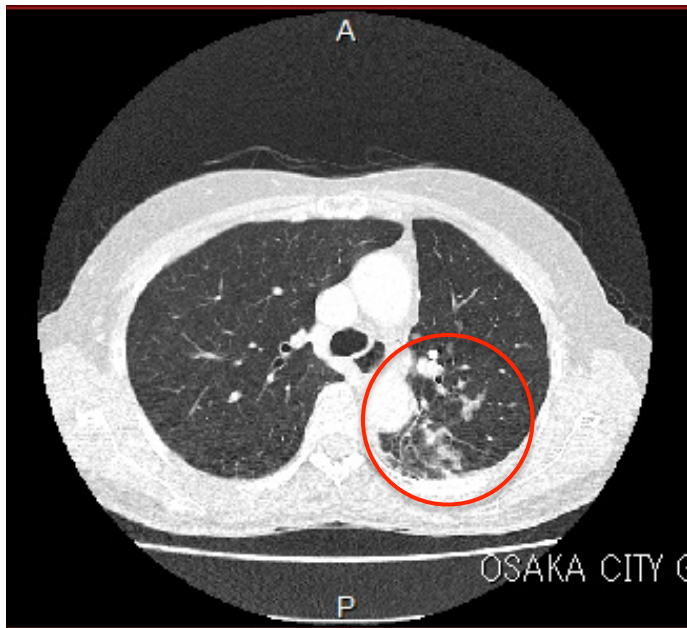


Case report: Lung cancer

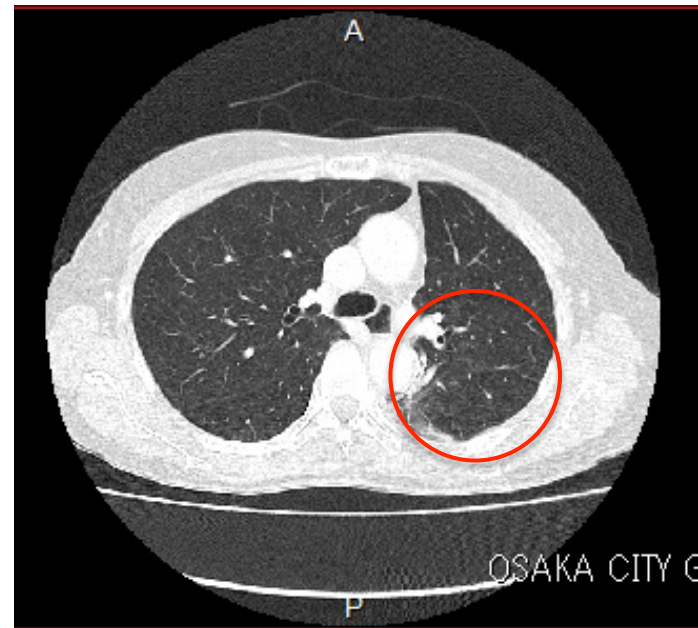
- 64 year old female with lung cancer, adenocarcinoma, stage 4
- Sep 2012 Patient presented at Saisei Mirai
- Integrative Therapies:
 - Iressa targeted therapy
 - 1500 ng High Dose GcMAF 2 times weekly IM injection for 6 months (48 times total)
 - Regional Hyperthermia, 8 times (Thermotron RF8)
 - 4.5 mg Low Dose Naltrexone (LDN) daily

Case report: Lung cancer (cont.)

- Patient achieved complete response by August 2013.
- In remission: 1500 ng High Dose GcMAF 1 time/week (48 doses) for about 1 year to reduce the risk of recurrence.



CT 5-Sep-2012



CT 14-Jun-2013